

Request for Resource

GJXDM Information Exchange Package
Documentation
Generated: September 15, 2006

Table of Contents

<u>TABLE OF CONTENTS</u>	2
<u>1. PURPOSE AND SCOPE</u>	4
1.1. Scope.....	4
1.2. Purpose:.....	4
<u>2. LIST OF ARTIFACTS</u>	4
<u>3. XML SCHEMAS</u>	4
<u>4. ADDITIONAL IEP PROVISIONS</u>	4
<u>4.1. Additional Property Definitions</u>	5
Document.....	5
Document Sections	5
Components	5
Elements	5
Document Local XML Types	9
Document Local XML Elements.....	9
<u>4.2. Minimal Properties Set</u>	11
<u>4.3. Additional Business Rules</u>	11
4.3.1. Description.....	11
4.3.2. Data Exchanges	12
<u>5. SAMPLES</u>	12
<u>6. DEVELOPMENT</u>	12
6.1. Participants	12
6.2. Process:.....	13
6.3. Development Artifacts:	13
6.3.1. Data Model Diagram	13
6.3.2. Source Documents	14
6.3.3. Revision History:.....	14
<u>7. TESTING AND CONFORMANCE</u>	14

8. FEEDBACK..... 14

1. Purpose and Scope

1.1. Scope

National

1.2. Purpose:

2. List of Artifacts

1. GJXDM Subschema
2. Extension Schema
3. Document Schema
4. XML Document Instance
5. Data Model Diagram
6. XMI Export
7. XML Mappings
8. GIEP Description

3. XML Schemas

GJXDM Version: 3.0.3

Schema Type	File Name
Subset Schema	Request for Resource Schema Package\jxdm\3.0.3\jxdm.xsd
Extension Schema	Request for Resource Schema Package\ap.xsd
Document Schema	Request for Resource Schema Package\Request for Resource.xsd

4. Additional IEP Provisions

4.1. Additional Property Definitions

Document

Name	Description
Request for Resource	The agency that owns the Call for Service previously determined that a particular resource of an external agency is available. This exchange is a request for a particular resource by ID number and Type.

Document Sections

Name	Description
Associated Agency	Agency that owns the resource
Call For Service	
Message Header	
Originating Agency	Agency that originally took the call for service.
Resource	

Components

Name	Description
Agency Identifier	
CFS Details	
CFS Identifiers	
CFS Location	Where the requested resource is needed. Completed for Resource requests, returns, etc. Uses the Location message elements to specify the Location
Comment	
Contact	
Contact Name	
Intersection Street	Could be a common intersection of a street or an on/off ramp.
Location Coordinates	
Organization Identifiers	
Other Location Parameters	
Premise Hazard	
Request Details	
Staging	Details on how a unit is to respond to a CFS.
Transaction Defaults	Fields to be populated by the system.
Unit Details	A unit responsible for handling a call for service.

Elements

Name	Description
-------------	--------------------

Request for Resource Information Exchange Package Definition

Name	Description
Address Type	Block address, common place or intersection.
Agency Name	The official name of a justice-related agency
Agency ORI	A unique agency identifier as assigned by the NCIC system.
Altitude	The altitude measure of the location.
Altitude Reference Point	e.g. ground level, sea level.
Altitude Unit of Measure	The units of measure for the altitude (e.g. feet, miles, meters)
Area Code	Number Plan Area
Building Designation	The name or number of a building.
Building Usage Text	Describes the usage of the building, e.g. Gun Shop, Nuclear Power Plant
CFS Date	The call for service date expressed in UDT.
CFS Description	A text description of the call for service.
CFS Status	Current or previous status of a call for service e.g., coming shortly, open, closed.
CFS Time	The call for service time expressed in UDT.
Call Method	Communications mechanism used in call for service (e.g. telephone, cell phone, radio, etc.)
Call Priority	The priority assigned to the call based on the type of call (burglary, shooting, etc.) and other additional information provided by the caller.
Call Sub Type Text	Text indicating the sub-type of the call (e.g. Robbery Alarm, Fire Alarm, Intrusion Alarm).
Call Type Text	Call type. e.g., Alarm, Burglary, Fire, Accident.
Capability Type Quantity	Quantity / number of items
Capability Unit Of Measure	Unit of Measure associated with the capability type quantity
Category of Response	Indicates the level of response (e.g. lights, lights & siren)
Cell ID	Text that specifically identifies a particular cell tower.
Cell Sector ID	Text that specifically identifies a particular cell sector.
Comment Date	The date a comment was added to a call for service record.
Comment Text	
Comment Time	The time a comment was added to a call for service record.
Common Place Name	e.g. Mall, Washington Monument, Arlington Cemetary, Central Park.
Coordinate Date	Date that the coordinates were recorded by the device in UTC.
Coordinate Time	Time that the coordinates were recorded by the device in UTC.
Country Code	
County Code	
Datum	Indicates the Lat/Long system, UTM and projection year. Need to research what NENA standard specifies for preferred Coordinate System to use.

Request for Resource Information Exchange Package Definition

Name	Description
	Specifies the map projection and coordinate system recommended for the display of longitude and latitude coordinates.
E-Mail	
Exchange Date	
Exchange Time	
Fire Severity Level	Indicates the severity of a fire and the corresponding response based on procedure. (e.g. three alarm fire)
First Name	
Floor Identifier	
Full Address Text	Unparsed address in full.
Full Name	
Hazard Text	
Last Name	
Latitude Degree	
Latitude Minute	
Latitude Second	
Location Description	e.g. may indicate mile marker.
Location Name	
Longitude Degree	
Longitude Minute	
Longitude Second	
Message ID	The local ID that matches the response to the request.
Message Key	Indicates the specific kind of service being requested. Usually agreed upon by the various interfaces.
Middle Name	
Municipality Name	
Name Prefix	
Name Suffix	
Name Type Code	Describes the kind of name (e.g. moniker, true name, aka, maiden name, etc.).
Operator ID	May be name, employee id, initials, or terminal id etc.
Organization ID	An alphanumeric identifier used to uniquely identify an organization, agency or court.
Organization Name	<p>The name of the dispatch requesting agency (typically an alarm central station) or the responding agency (typically a police or fire department or central dispatch point) or responder.</p> <p>Organization Name has to be unique across all requestors and responders if we want to use it as an identifier. Otherwise a separate Organization Id will have to be used.</p>
Organization Type	Examples include business, criminal organization, terrorist organization
Originating Agency CFS Number	A unique identifier of the Originating CFS.
P.O. Box	
Postal Code	

Request for Resource Information Exchange Package Definition

Name	Description
Radio Channel	Radio channel used.
Request Comments	Additional information providing text details about the request for resources.
Requested Action	Action for first responder or other receiving organization (e.g. dispatch first responder, notification only).
Requested Quantity	The number of the equipment identified in other EMResource elements that has been requested.
Resource Capability Details	<p>examples include:</p> <p>Employ explosive tools to conduct specific or general disruption Demolition Kit Bomb Technician Hand Tools</p>
Resource Category Text	Category of resource, e.g. Firefighting, Law Enforcement
Resource Component Name	Equipment, Personnel, Vehicle, Aircraft
Resource Description Text	Free Text alternative to "Resource Keyword"
Resource Keyword	<p>Any value from a discrete managed list, used to specify a resource, in the form:</p> <ul style="list-style-type: none"> · resourcekeyword · valueListUrn · value · resourcekeyword <p>Where the content of valueListUrn is the Uniform Resource Name of a published list of values and definitions, and the content of value is a string denoting the value itself.</p>
Resource Kind Text	Equipment, Team
Resource URN Value	Automated Resource Management System FEMA resource typing structure. Uniform Resource Name of a certified list maintained by the Community of Interest (COI) for the value referenced. Facilitates link to ARMS structured managed list
Room Number Text	Free form text field describing a location e.g. apartment 218, Suite 312.
Routing Instructions Text	The route that the unit is to take to access the CFS.
Special Requirements Text	A description of any special needs related to the requested resource (e.g. must carry protective gear)
Speed	Speed that the coordinates recording device was moving.
Speed Unit Of Measure	miles/hour km/hour ft/sec knots
Staging Location Text	A location where units or resources are organized and assembled to respond to a call for service. May be stated in terms of a geo

Request for Resource Information Exchange Package Definition

Name	Description
	code, street address, or common place name.
State Code	
Street Name	The address of the site.
Street Number	
Street Post Directional	
Street Pre Directional	
Street Type	e.g. Ave., St., Blvd.
Subdivision Name	Formal or informal name given to a residential or commercial area. (e.g. Downtown Business District, LoDo)
Submission Date	
Submission Time	
Subscriber ID	Last 4 digits of a phone number.
Telephone City Code	
Telephone Country Code	
Telephone Number Extension	
Telephone Number Type	Cell Phone, Fax, Land Line etc
Telephone Prefix	AKA NXX Refers to the exchange which is the three digits following the area code
Terminal ID	Uniquely identifies a computer terminal device.
Uncertainty Distance	A confidence measure derived from the number of cell sites, distance of the coordinates recorded from the cell site, accuracy of measurement of the coordinates and is typically expressed in meters.
Unit Status Date	

Document Local XML Types

Name	Description
ARMSResourceComponentCapabilityDetailsType (SuperType)	
ARMSResourceComponentCapabilityMetricItemType (SuperType)	
ARMSResourceComponentType (SuperType)	
ActivityType (ActivityType)	A structure that describes details about an activity or process that occurs
CellLocationServiceType (SuperType)	
EMContactRoleCodeSimpleType	
EMResourceInformationType (SuperType)	
EMResourceType (OrganizationType)	
LocationType (LocationType)	
OrganizationType (OrganizationType)	
ResourceComponentCapabilityTypeCodeType (TextType)	
ServiceCallType (ServiceCallType)	
ValueType (SuperType)	

Document Local XML Elements

Name	Description
------	-------------

Request for Resource Information Exchange Package Definition

Name	Description
ARMSResourceCategoryText (TextType)	Automated Resource Management System FEMA resource typing structure. See: http://www.fema.gov/nims/mutual_aid.shtm
ARMSResourceComponent (ARMSResourceComponentType)	
ARMSResourceComponentCapabilityDetails (ARMSResourceComponentCapabilityDetailsType)	
ARMSResourceComponentCapabilityMetricItem (ARMSResourceComponentCapabilityMetricItemType)	
ARMSResourceComponentName (TextType)	Automated Resource Management System FEMA resource typing structure. See: http://www.fema.gov/nims/mutual_aid.shtm
ARMSResourceKindText (TextType)	Automated Resource Management System FEMA resource typing structure. See: http://www.fema.gov/nims/mutual_aid.shtm
ARMSURNValue (ValueType)	Automated Resource Management System FEMA resource typing structure. Uniform Resource Name of a certified list maintained by the Community of Interest (COI) for the value referenced. Facilitates link to ARMS structured managed list
AssociatedAgency (OrganizationType)	Agency that owns the resource
CFSCComment (ActivityType)	Comments about a particular call for service. Any number of comments may be associated with a call for service.
CFSCRequestedActionText (TextType)	Action for first responder or other receiving organization (e.g. dispatch first responder, notification only).
CallPriorityText (TextType)	The priority assigned to the call based on the type of call (burglary, shooting, etc.) and other additional information provided by the caller.
CallSubTypeText (TextType)	Text indicating the sub-type of the call (e.g. Robbery Alarm, Fire Alarm, Intrusion Alarm).
CallTypeText (TextType)	Call type. e.g., Alarm, Burglary, Fire, Accident.
CapabilityTypeQuantity (QuantityType)	See: http://www.fema.gov/nims/mutual_aid.shtm - Quantity / number of items
CapabilityTypeUnitOfMeasureText (TextType)	See: http://www.fema.gov/nims/mutual_aid.shtm - Unit of Measure associated with the capability type quantity.
CellID (IDType)	
CellLocationService (CellLocationServiceType)	Provides information about the location of a cellular phone.
CellSectorID (IDType)	Identifies the sector of a cellular network
EMResource (EMResourceType)	
EMResourceInformation (EMResourceInformationType)	
FireSeverityText (TextType)	Indicates the severity of a fire and the corresponding response based on procedure.

Name	Description
	(e.g. three alarm fire)
OriginatingAgencyOrganization (OrganizationType)	Details about a unit which conducts some sort of business or operations.
PremiseHazardText (TextType)	Describes the types of hazards that may be present at the premise.
RecordedSpeedRate (RateType)	The speed rate of the target as measured by the GPS.
ReportingInstructionsText (TextType)	The name of the party that the requested item is to report to when they arrive at the incident.
RequestCommentText (TextType)	Additional information providing text details about the request for resources.
ResourceComponentCapabilityTypeCode (ResourceComponentCapabilityTypeCodeType)	Automated Resource Management System FEMA resource typing structure. See: http://www.fema.gov/nims/mutual_aid.shtm
ResourceDescriptionText (TextType)	Free Text alternative to "Resource Keyword" (or may be used in addition). Any description of resource or resource characteristics, situation requiring resource assistance, statement of mission resource must satisfy, or RFI text.
ResourceKeywordValue (ValueType)	Any value from a discrete managed list, used to specify a resource, in the form: <pre><resourcekeyword> <valueListUrn>valueListUrn</valueListURN> <value>value</value> </resourcekeyword></pre> where the content of valueListUrn is the Uniform Resource Name of a published list of values and definitions, and the content of value is a string denoting the value itself.
ResourceQuantity	Number of resources
ResourceSpecialRequirementsText (TextType)	A description of any special needs related to the requested resource (e.g. must carry protective
ServiceCall (ServiceCallType)	Details about a call for service received from a person alerting an authority of a situation. (ServiceCallType)
ServiceCallResponseLocation (LocationType)	A location where a response unit should be sent to handle a call for service.
TerminalID (IDType)	Uniquely identifies a terminal device.
ValueText (TextType)	A Value from a certified list maintained by the Community of Interest (COI) for the referenced element.

4.2. Minimal Properties Set

4.3. Additional Business Rules

4.3.1. Description

- Hazard and Alert flags may be filtered/provided based upon CFS type and local rules.
- An acknowledgement of the receipt of the resource request should be send back from the External Agency to the Originating Agency.
- The External agency will create a Call for Service record and return this CFS number in the exchange.
- The unit may be requested based on the unit ID, equipment type, skill type, or apparatus.
- A single request message can specify only a single unit type but indicate multiple quantities. This allows each unit type to respond to a different location.
- The CAD system may actually implement this by automatically sending the multiple messages in response to a single request by the user.

4.3.2. Data Exchanges

1. During the In-process state, at the Request Resource event, If resource is available & If requesting agency requests resource the Requesting Agency sends the Request for Resource to the External Agency for the Release Resource event in the In-process state.

5. Samples

6. Development

6.1. Participants

Martin Moody-APCO-APCO
Aaron Gorell-URL Integration-Consultant
Dominique Caspers-URL Integration-Consultant
Suzette McLeod-IJIS Institute-IJIS
Alan Harker-Spillman-Industry
ChengLu Meng-Tritech-Industry
Neil Kurlander-Asynchrony Solutions-Industry
Pedro Quintero-Sungard OSSI-Industry
Tom Dewey-Advanced Justice Systems-Industry
Dan Murray-IT management Section Commander, Arlington (VA) Police Department-LEITSC
Dave Mulholland-US Park Police-LEITSC
Dina Jones-CAD Manager, Storycounty (IA) Sheriffs Department-LEITSC
Heather Ruzbasan-IACP-LEITSC
Matt Snyder-IACP-LEITSC
Judy Harrison-Intergraph Corporations-IJIS
Len Bullard-Intergraph Corporations-IJIS

Bruce Kelling-Bask Entrprises-Industry

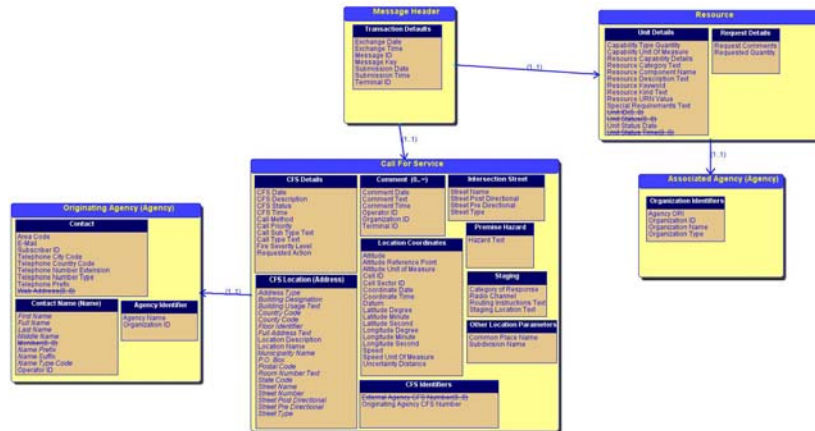
6.2. Process:

This IEPD modeled during a series of sessions that focused on defining the scope of CAD related exchanges using the JIEM Exchange Modeling process. This discussion was followed-up with identification of the elements that would be required for each document identified during exchange modeling. These data requirements were documented using a domain model. The CAD group met twice: the first in Ashburn, VA on March 21, 2006 and the second in Denver on May 16, 2006.

6.3. Development Artifacts:

6.3.1. Data Model Diagram

Request for Resource Class Diagram



6.3.2. Source Documents

6.3.3. Revision History:

7. Testing and Conformance

8. Feedback